



# Forreestfield Airport Link

Forreestfield to Bayswater, WA

McDowall Affleck

CONSULTING ENGINEERS | PROJECT MANAGERS

Responsive. Reliable. Results.



## Salini Impregilo - NRW Joint Venture

### Overview

McDowall Affleck assisted the Salini Impregilo-NRW Joint Venture during the construction of the Forreest Field link project. McDowall Affleck was requested to provide design and third-party certification of temporary works including lifting studies, lifting equipment, steel platforms, pipe supports, plant equipment supports and foundations.

### Type of Engineering Work

Structural Engineering

### Work Timeframe

December 2016 - Current

### Contract Value

Commercial in confidence

### McDowall Affleck Contact

Alberto Puccini & Ben Galvin

### Scope of Work

- Design and third party certification of temporary works
- Lifting studies and installation procedures
- Lifting equipment
- Steel platforms
- Pipe supports
- Plant equipment supports and foundations

### Project Challenges

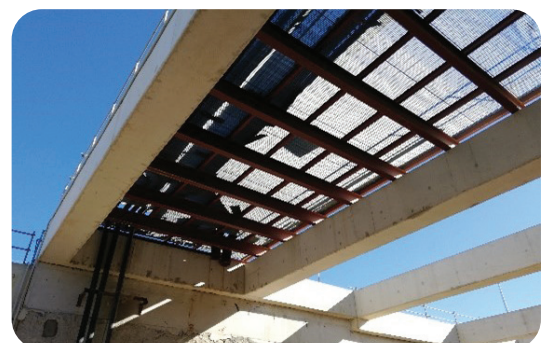
- Quick response time required
- Information required from third parties
- Lack of site-specific geotechnical information requiring conservative assumptions

### How we managed this

- Office location close to site and dedicated engineer on the project
- Proactive approach and good communication with Salini Impregilo - NRW Joint Venture team
- Optimised design to meet conservative assumptions

### Value Engineering

- Timely response of McDowall Affleck's dedicated engineer avoided site delays
- Optimised design of foundations for heavy plant equipment
- Flexible design approach to include material available on site and contractor's preferred installation process



RESPONSIVE. RELIABLE. RESULTS.