



Forreestfield to Bayswater,
WA



McDOWALL AFFLECK
CONSULTING ENGINEERS
Responsive. Reliable. Results.



MA DEACON
ENGINEERS
Responsive. Reliable. Results.

Salini Impregilo/NRW Joint Venture - Forreestfield Airport Link

Overview

McDowall Affleck assisted the Salini Impregilo-NRW Joint Venture during the construction of the Forreestfield link project. McDowall Affleck was requested to provide design and third-party certification of temporary works including lifting studies, lifting equipment, steel platforms, pipe supports, plant equipment supports and foundations.

Type of Engineering Work

Structural Engineering

Work Timeframe

December 2016 - Current

Contract Value

Commercial in Confidence

McDowall Affleck Contact

Alberto Puccini & Ben Galvin

Scope of Work

- Design and third party certification of temporary works
- Lifting studies and installation procedures
- Lifting equipment
- Steel platforms
- Pipe supports
- Plant equipment supports and foundations

Project Challenges

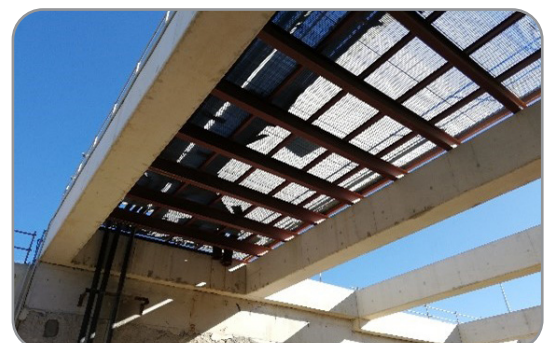
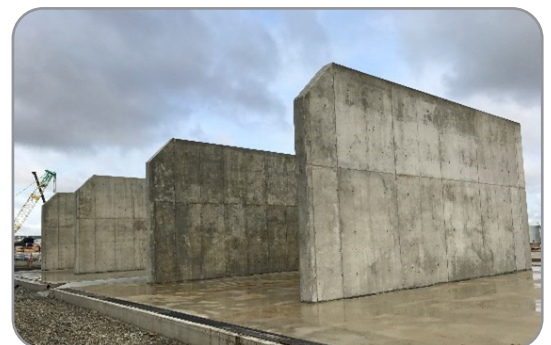
- Quick response time required
- Information required from third parties
- Lack of site-specific geotechnical information requiring conservative assumptions

How we managed this

- Office location close to site and dedicated engineer on the project
- Proactive approach and good communication with Salini Impregilo - NRW Joint Venture team
- Optimised design to meet conservative assumptions

Value Engineering

- Timely response of McDowall Affleck's dedicated engineer avoided site delays
- Optimised design of foundations for heavy plant equipment
- Flexible design approach to include material available on site and contractor's preferred installation process



RESPONSIVE. RELIABLE. RESULTS.